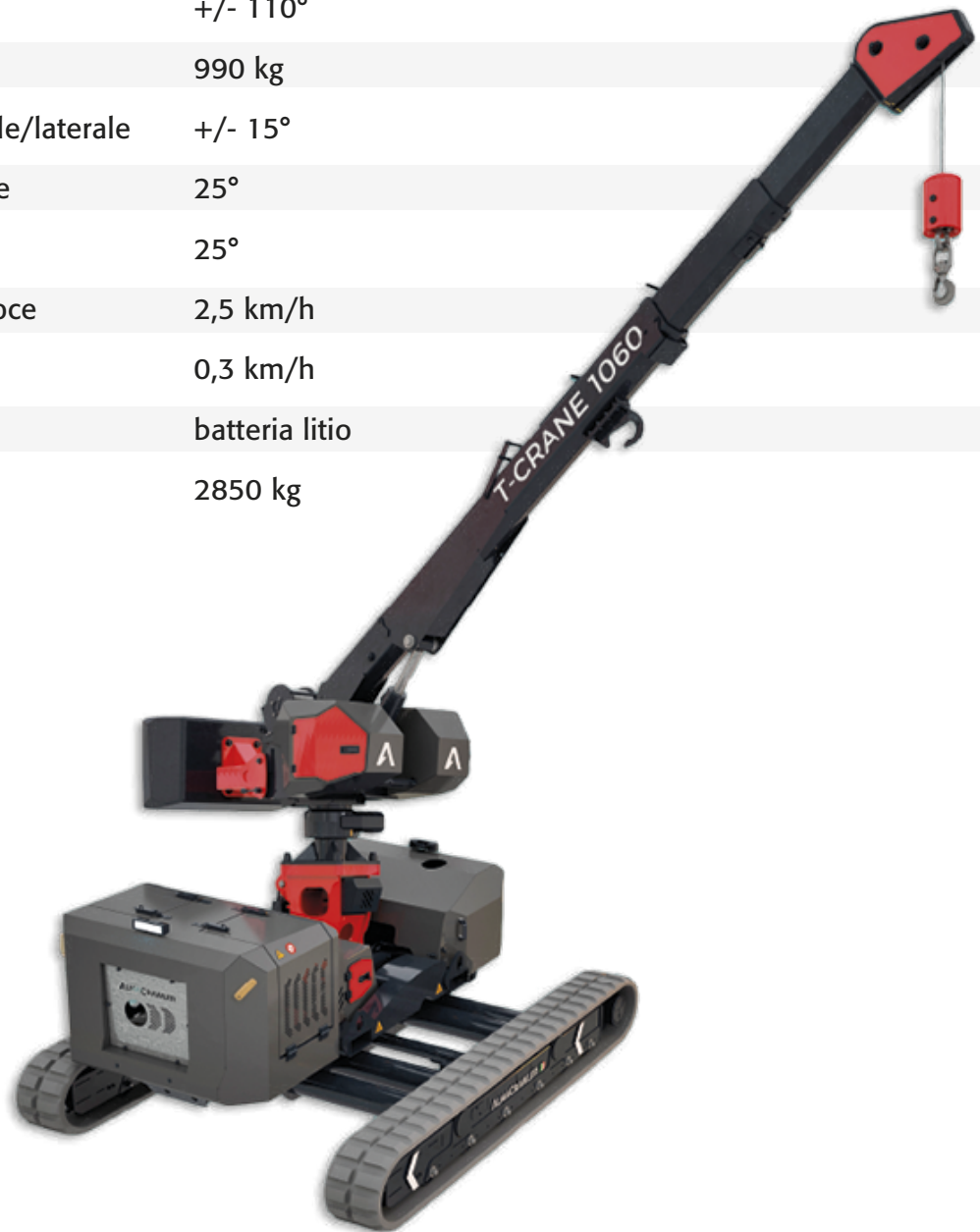


GRU ELETTRICHE SEMOVENTI

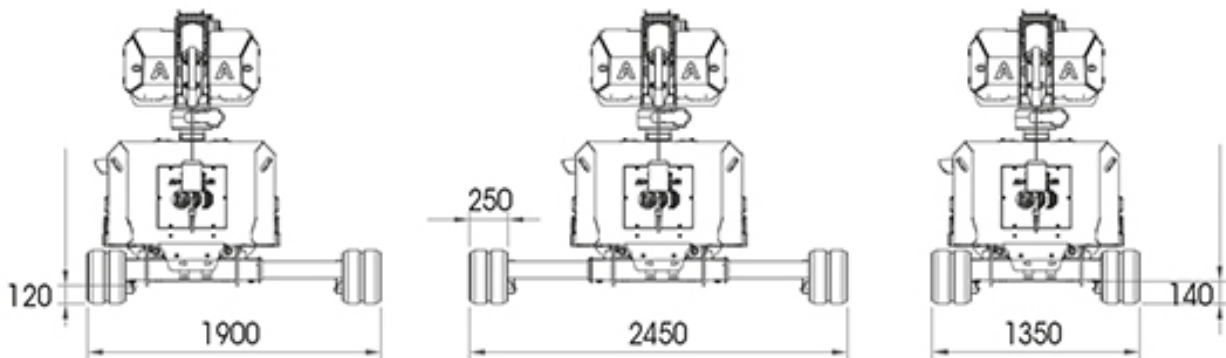
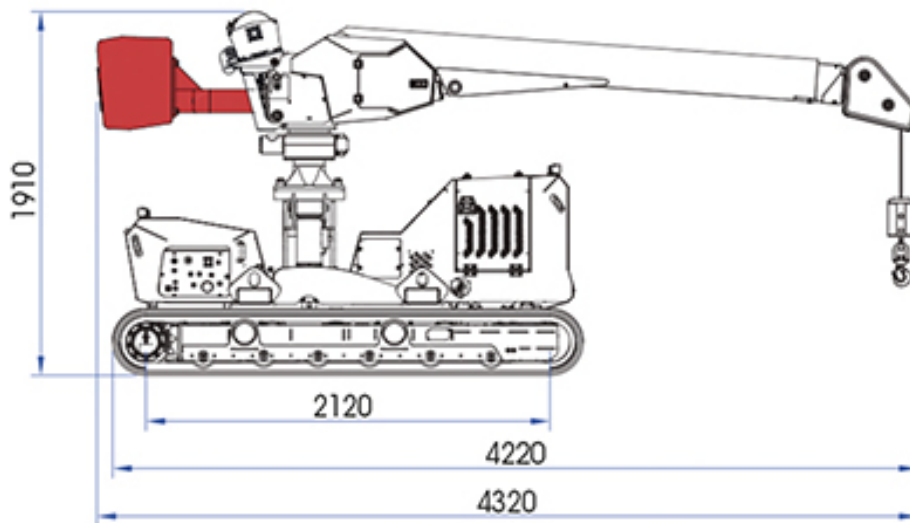
Dati tecnici

Altezza max lavoro	7,70 m
Sbraccio max lavoro	6,10 m
Angolo rotazione torretta	+/- 110°
Portata massima	990 kg
Livellamento longitudinale/laterale	+/- 15°
Pendenza max superabile	25°
Pendenza max laterale	25°
Velocità traslazione - veloce	2,5 km/h
Velocità sicurezza	0,3 km/h
Alimentazione	batteria litio
Peso	2850 kg



GRU ELETTRICHE SEMOVENTI

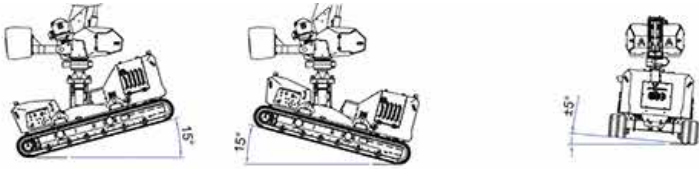
Dimensioni (mm)



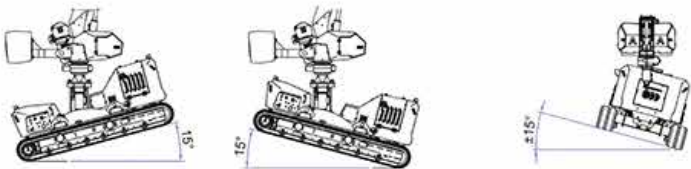
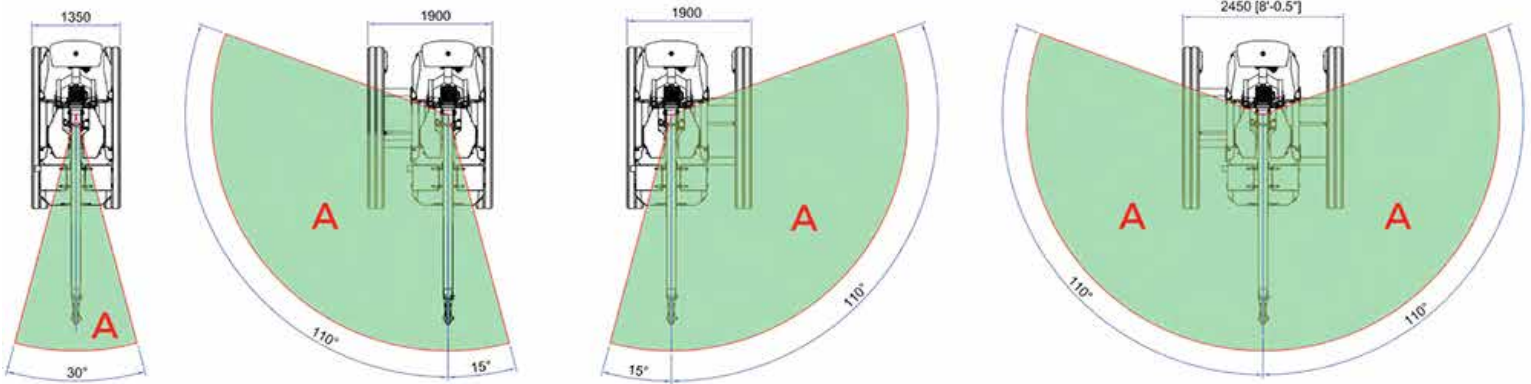
GRU ELETTRICHE SEMOVENTI

DIAGRAMMA - STATICO

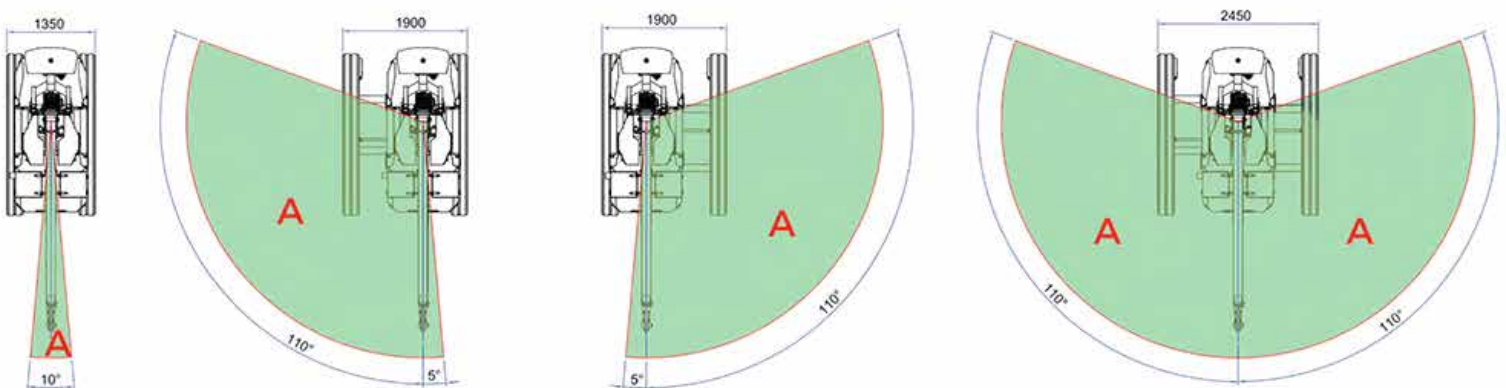
A - Massime performance di sollevamento



Inclinazione longitudinale +/- 15°
Inclinazione laterale +/- 5°



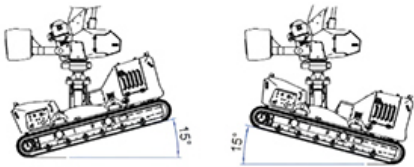
Inclinazione longitudinale +/- 15°
Inclinazione laterale +/- 15°



GRU ELETTRICHE SEMOVENTI

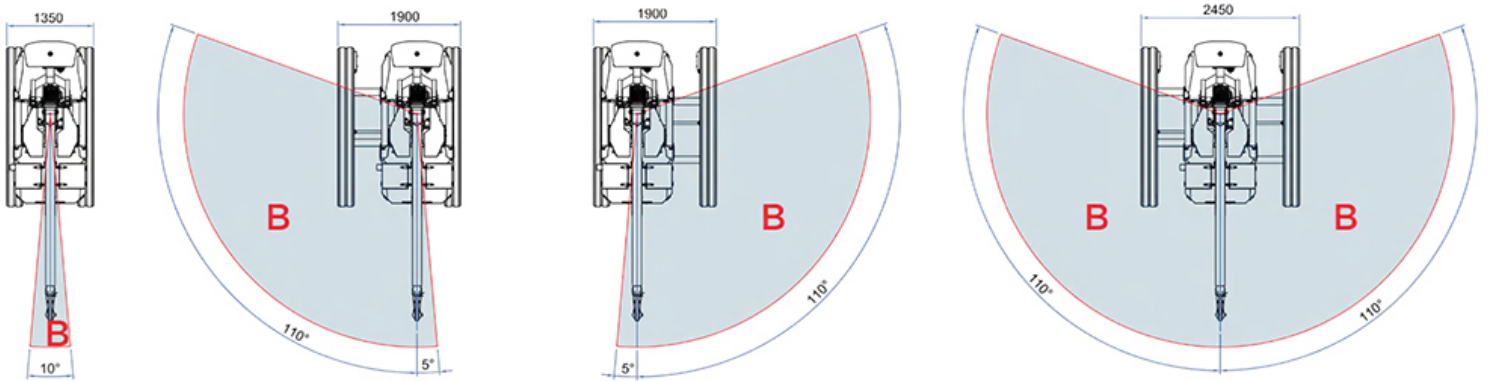
DIAGRAMMA - MOVIMENTO

B - Abilitazione automatica alla traslazione in base al carico

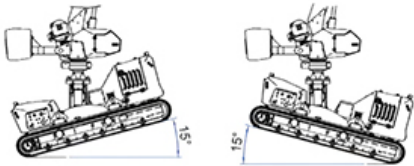


Inclinazione longitudinale +/- 15°

Inclinazione laterale +/- 5°

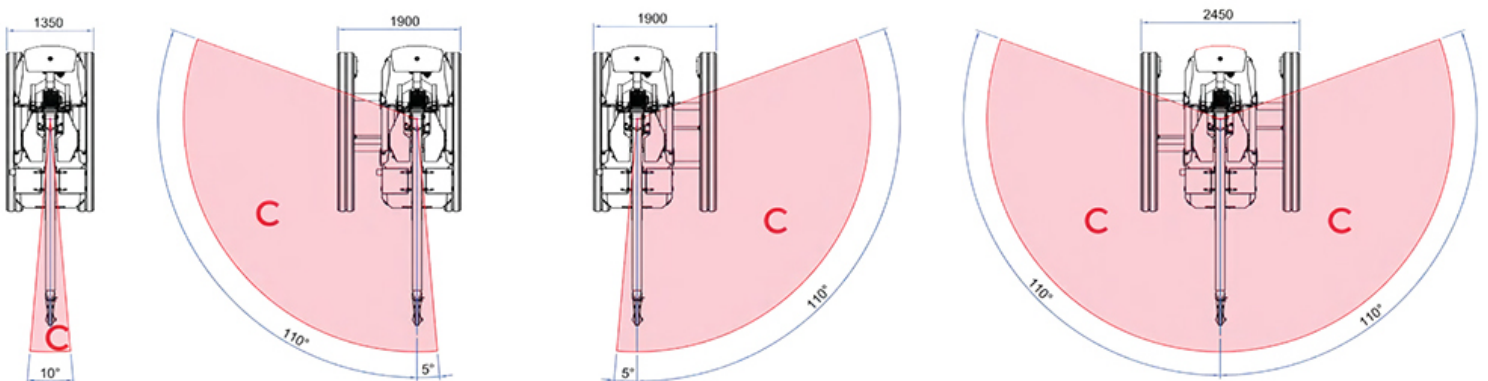


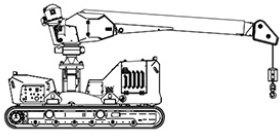
C - Diagramma di lavoro di 990 kg con zavorra



Inclinazione longitudinale +/- 15°

Inclinazione laterale +/- 15°



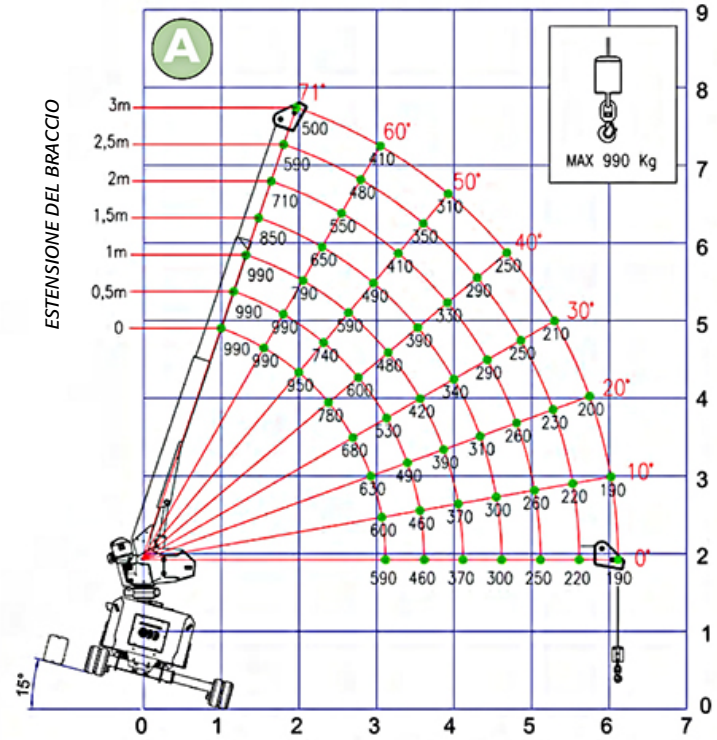
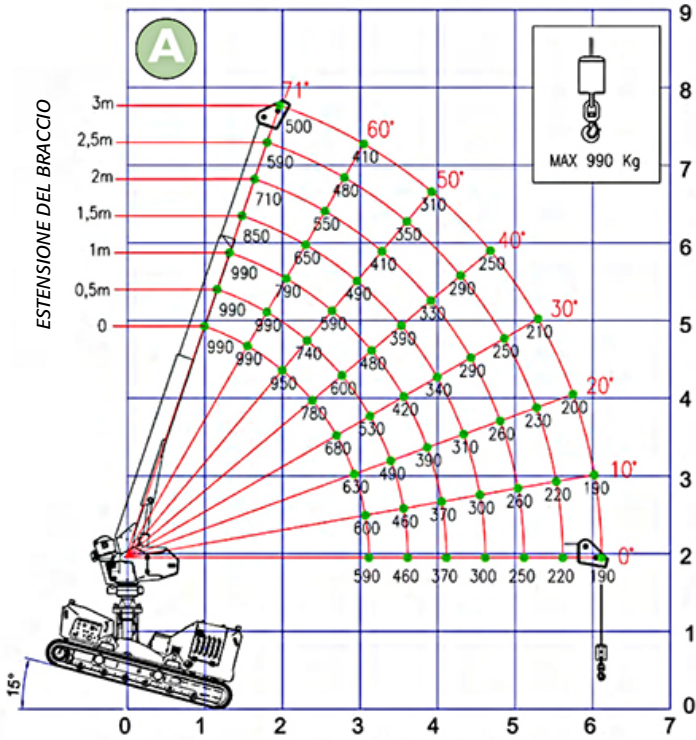


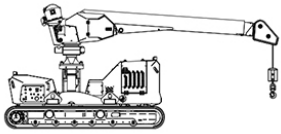
SENZA CONTRAPPESO

GRU ELETTRICHE SEMOVENTI

DIAGRAMMA - STATICO

A - Massime performance di sollevamento



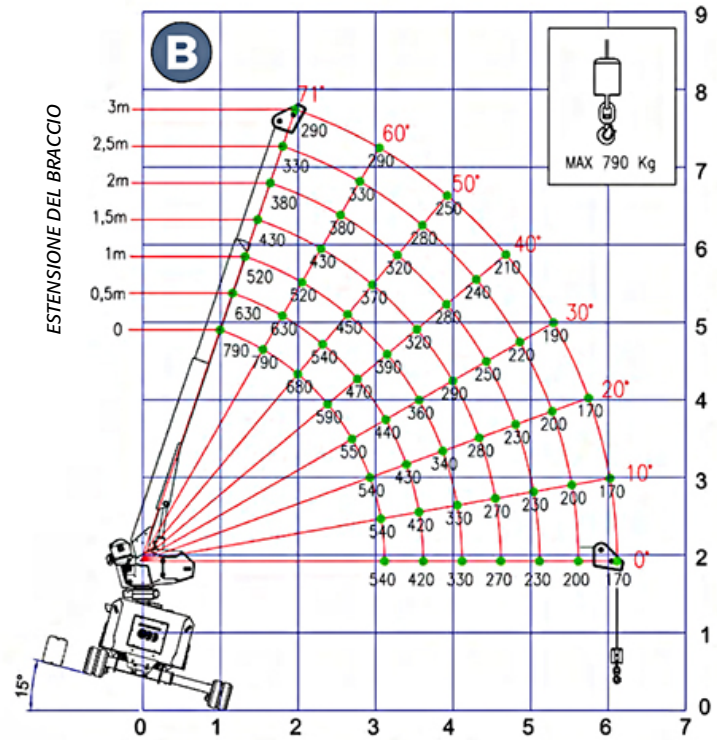
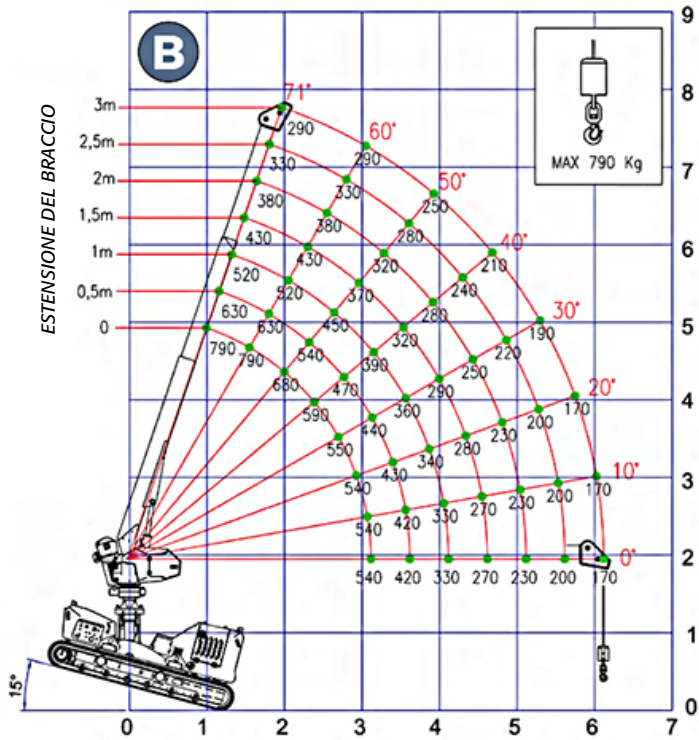


SENZA CONTRAPPESO

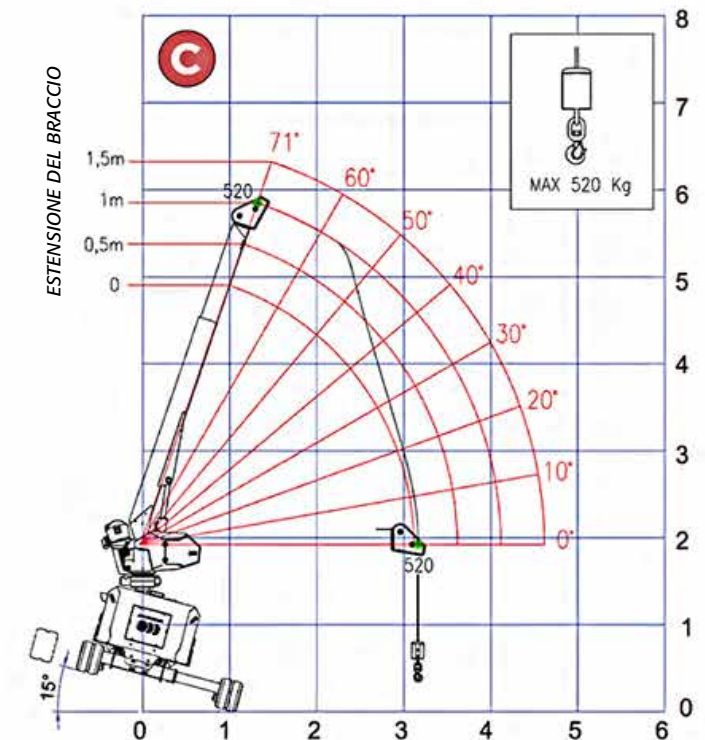
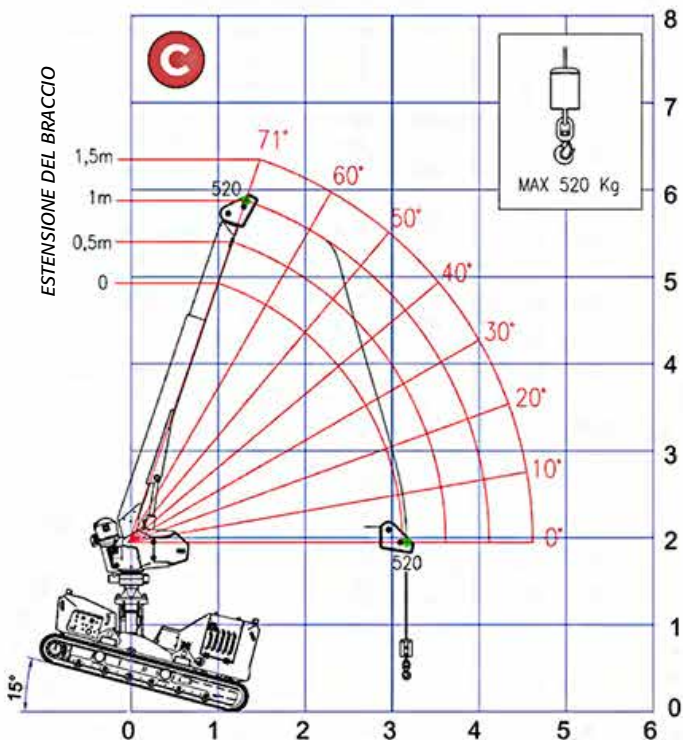
GRU ELETTRICHE SEMOVENTI

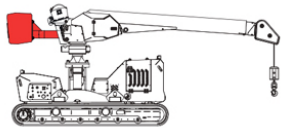
DIAGRAMMA - MOVIMENTO

B - Abilitazione automatica alla traslazione in base al carico



C - Diagramma di lavoro di 990 kg con zavorra



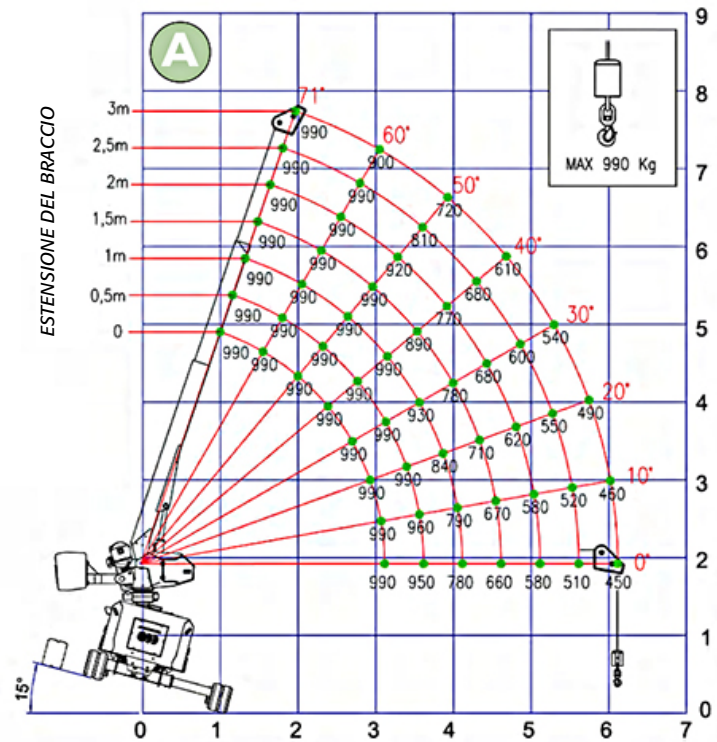
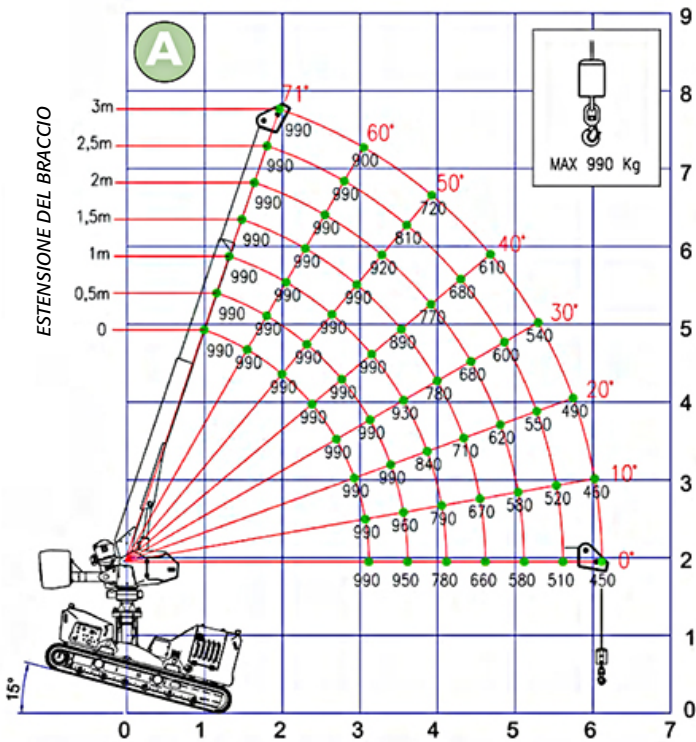


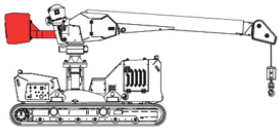
CON CONTRAPPESO

GRU ELETTRICHE SEMOVENTI

DIAGRAMMA - STATICO

A - Massime performance di sollevamento



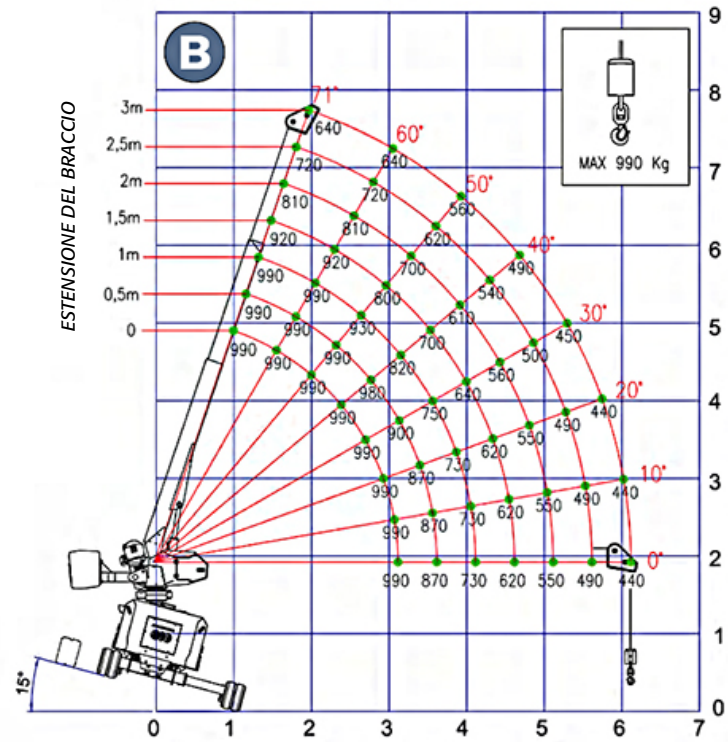
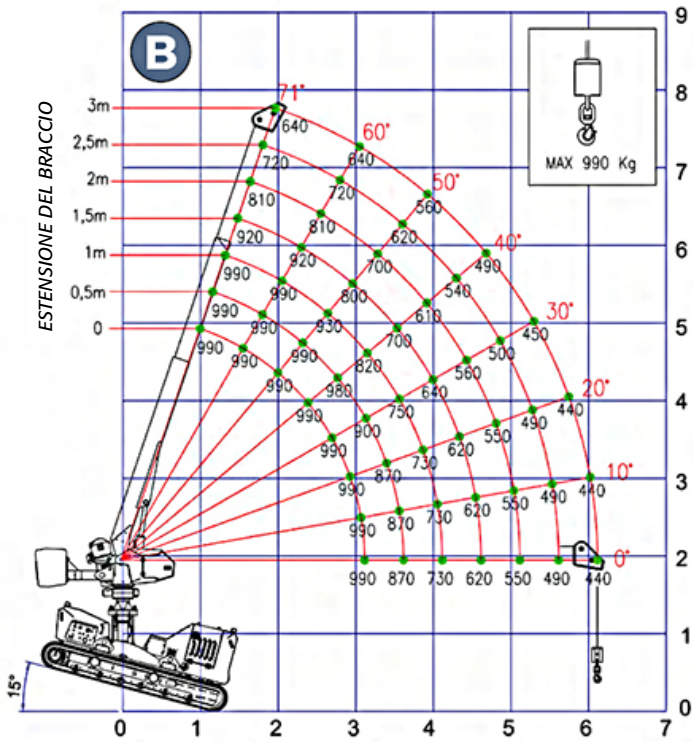


CON CONTRAPPESO

GRU ELETTRICHE SEMOVENTI

DIAGRAMMA - MOVIMENTO

B - Abilitazione automatica alla traslazione in base al carico



C - Diagramma di lavoro di 990 kg con zavorra

